

LED Flashlight

Lighter. Smaller. Longer-lasting product.



More efficient maintenance concept with longer interval and cheaper batteries.

Key facts

- Flashlight that meets all requirements of ARP1798 Rev B
- Utilizes commercially available battery cells in lieu of supplier specific custom battery cells
- Bracket with multiple interfaces, which fit different OEM / supplier interface points
- Battery indication integrated inside the flashlight



Design Features

Custom Colour Rings



Easily identifiable Battery Status and On-Off Button



RFID tag

- ATA Spec 2000 complaint RFID Tag
- Additional identification
- (no RFID) on bracket



PNR: P3APP005000A
DESC: FLASHLIGHT
SER: 22010001H
AMDT: A
DMP: 012022
MFR: CES79

Operates with three commercially available AA/LR6 Batteries



Bungy style wrist lanyard

Industry/Government specifications

The following Industry and Government specifications that our Flashlight is compliant to:

Ref	Document	Document Title	Source
1	14 CFR Part 25	Airworthiness Standards: Transport Category Airplanes, Code of Federal Regulations	FAA
2	CS 25	Certification Specifications for Large Airplanes	EASA
3	ARP1798	Aerospace Recommended Practice for Portable Emergency Lighting Systems for Flight Crew Members	SAE Aerospace
4	RTCA-DO 160	Environmental Conditions and Test Procedures for Airborne Equipment	RTCA
5	MIL-STD-810	Environmental Engineering Considerations and Test Methods	Department of Defence

Contacts

Accenture
Blohmstrasse 12, 21079 Hamburg, Germany
www.accenture.com
hw.customer-service@accenture.com

Copyright © 2024 Accenture.
All rights reserved.

LED Flashlight

Lighter. Smaller. Longer-lasting product.



Comparison with product of current market leader

Criteria	Accenture Flashlight	Competitor
SAE requirements	Yes	No
Maintenance costs*	Low	High
Maintenance interval	7 years	5 years
Battery indicator	In flashlight	In bracket
Energy source	commercially available 'AA'/LR6 Batteries	Supplier specific battery pack
Legacy cockpit support	Yes	No
Hole pattern support	Multi interface	Single interface
Operating temperature	-40°C to 70°C (-40°F to 158°F)	-40°C to 70°C (-40°F to 158°F)
Candela	3000	2100
Operating time	5 hours	4 Hours
Operation	Manual On/Off Switch	Auto

* (Battery Change)

Accenture Flashlight



Size and Weight



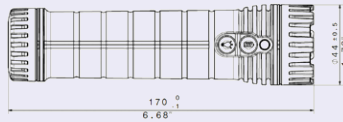
240 g 260 g 650 g

Competitor



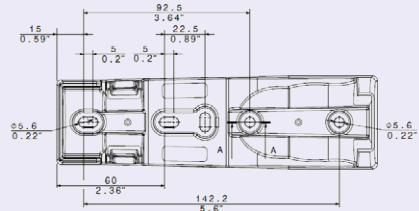
Technical Data

LED Flashlight



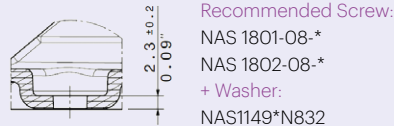
Part Number: P3APP005000A
Dimension: 170 x 44 mm
Weight: 180 g

LED Flashlight Bracket



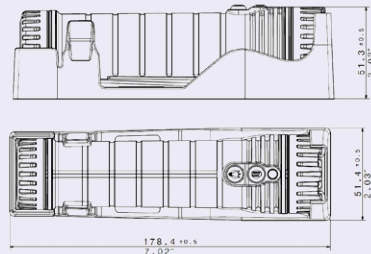
Part Number: P3APP005001A
Dimension: 178.4 x 51.4 mm
Weight: 60 g

Valid for all interface positions



Recommended Screw:
NAS 1801-08-
NAS 1802-08-
+ Washer:
NAS1149*N832

LED Flashlight LED Flashlight Bracket



Part Number: P3APP005000A / P3APP005001A
Dimension: 178.4 x 51.4 x 51.3 mm
Weight: 240 g